

# MIVI Q™ Catheter.

## Steps for use

These instructions are to be used as a reference guide only. Please refer to the full instructions for use prior to using this product.

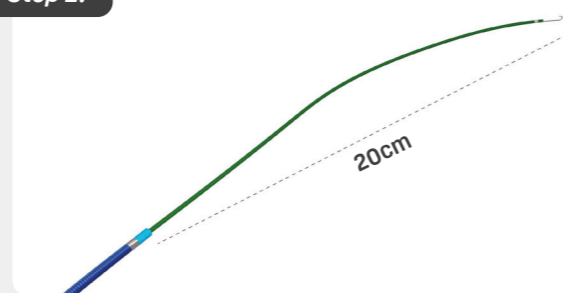


### Step 1.



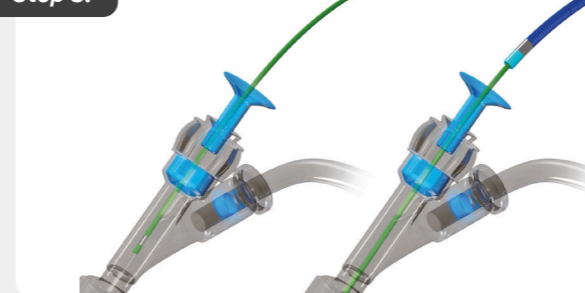
**FLUSH** the hoop with sufficient saline to fill the hoop until saline is observed exiting the opposite end of the hoop. This action ensures proper activation of the hydrophilic coating. Remove Catheter from the hoop. Flush the Catheter segment with saline before use.

### Step 2.



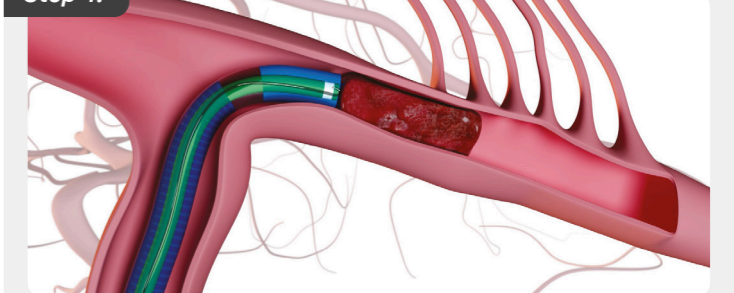
**PRELOAD** the microcatheter and guidewire approximately 20cm beyond the Q™ catheter distal tip.

### Step 3.



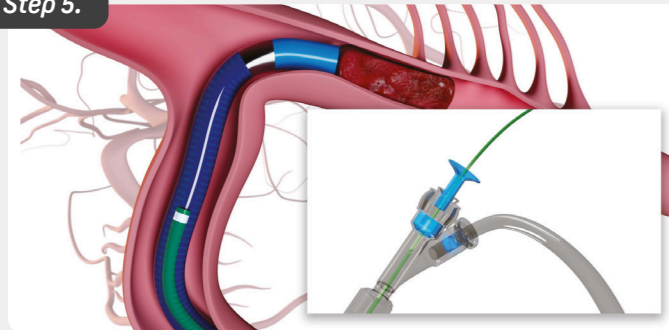
**INTRODUCE** the microcatheter and guidewire followed by the Q™ catheter into the 8F guide catheter.

### Step 4.



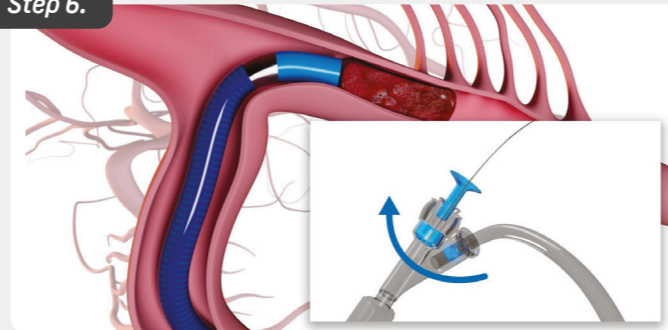
**ADVANCE** the guidewire/microcatheter and Q™ catheter until the desired position is obtained.

### Step 5.



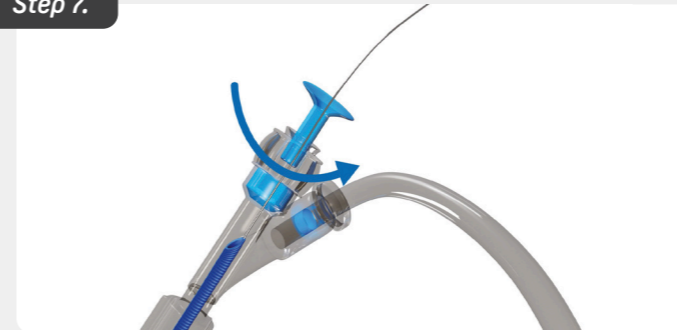
**REMOVE** guidewire and microcatheter carefully.

### Step 6.



**ATTACH** suction tubing to side port of 8F guide catheter. **INITIATE** aspiration. Ensure the RHV is tightened onto the pusher wire.

### Step 7.



**RETRACT** the Q catheter until the proximal portion of the catheter is visible in the stem of the rotating haemostasis valve. **OPEN** rotating haemostasis valve to allow removal of Q™ catheter.

### Step 8.



**CLOSE** valve and allow suction to clear any clot/thrombus from 8F guide catheter. If another pass is needed, **FLUSH** Q™ catheter and repeat steps above for a maximum of three passes.

## Procedural Guide

Q™ Catheter Portfolio						Q™ Catheter Compatibility	
Device Model	Usable length	Catheter Section Length	Distal ID	Proximal ID	Distal OD	Maximum Micro-catheter Size	8F Guide Catheter/6F sheath ID Range
Q3	143cm	43cm	0.91mm (0.036")	1.45mm (0.057")	1.22mm (0.048")	2.4F	0.088" – 0.090" (2.2 – 2.3mm)
Q4	130cm	30cm	1.09mm (0.043")	1.45mm (0.057")	1.40mm (0.055")	3.0F	
Q5	125cm	25cm	1.45mm (0.057")	1.45mm (0.057")	1.83mm (0.072")	4.0F	
Q6	125cm	25cm	1.75mm (0.069")	1.75mm (0.069")	2.13mm (0.084")	5.0F	

## Devices required for use with the Q catheter

- 8F arterial guiding catheter or a 6F long femoral sheath with ID of 0.088" - 0.090" (**Min 90cm length**)
- Rotating haemostasis valve with Y adapter and stopcock. Required RHV length is 6 - 8cm
- Compatible guidewire (recommended)
- Compatible microcatheter (recommended)
- Appropriate vacuum source for aspiration

## Guidewire reintroduction

Recommended steps for reintroducing guidewire into Q™ catheter:

- Ensure the guidewire tip has been withdrawn fully into the microcatheter
- Enter the Q™ catheter with the microcatheter
- Advance the guidewire

